

BUVA SHETE has abstractly painted feminine emotions in relation to art and motherhood



The emotions of FEMININITY

Buwa Shete was born in Mahi Jalgaon. It is in Kolhapur district in Maharashtra, Buwa Shete went on to complete a degree in Applied Arts in Pune in 1984. He began his career as a commercial artist working with advertising agencies in creative positions. He was also involved with several leading publications as an illustrator and design consultant before taking on painting as a full-time occupation.

Buwa says that he has now developed his own style, which has imprints of his rural upbringing, juxtaposed with modern urban values he imbibed during his stay in cities such as Pune. "I often employ the human figure to tell a story and use everyday themes like parent and child to bring out various shades of human emotions," he says.

Buwa's exhibition of paintings brings to fore his penchant of the feminine form. Swamping his canvases with rich colours and garnishing them with muffled textures and tones, the artist places the female protagonist at the focus of each image. She is seen in isolation as well as in the company of friends. Presented in full profile - standing or reclining - she is the personification of grace and beauty. In a few paintings, she



ART WALK

A focus area Shivani is identified with is the sourcing of art for new buyers as well as for established collectors. Her capability of procuring works from diverse sources has resulted in her putting together collections which include old masters, established as well as upcoming artists. Shivani has created a platform for new talent for whom she holds regular shows as well. Her portfolio management skills have earned her a reputation for honesty and discretion, and an extensive domestic and international connoisseur-investor clientele, many well known in the art fraternity.

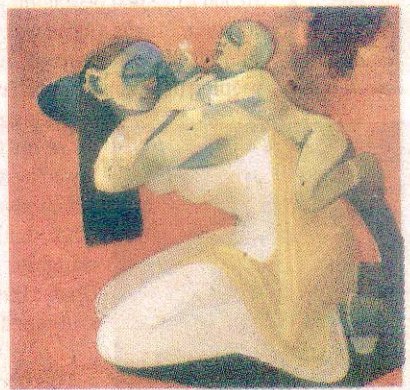
In fact Shivani's extensive, longstanding network with the fraternity means a personal connection with several leading artists. This strengthens the credibility of the authentication and valuation of their works, which she feels, is crucial in today's art world. The network extends to many prominent Indian and international galleries, with whom Artistree deals with regularly. Buva is a colour artist and the colouring style that she uses is very vibrant on the medium she has painted. His painting looks like the temperament of the silent melody of an artist who is playing the flute silently. The paintings have a very



is engrossed in a musical instrument or swaying on a swing. In yet another she is even presenting her bare back to a young kid to scribble letters!

The varied postures are handled with a soft touch to amplify the sweet tone and pleasing temper of the images. While the paintings seem to succeed in pleasing the eye, they cannot conceal their decorative facade. The characters have an ethereal existence and entrenched in a world of fantasy, far removed from the real world. The facial expression, the body language and the overall mood and feel of the paintings are excessively romantic - with other emotions and viewpoints seldom finding a place in the paintings.

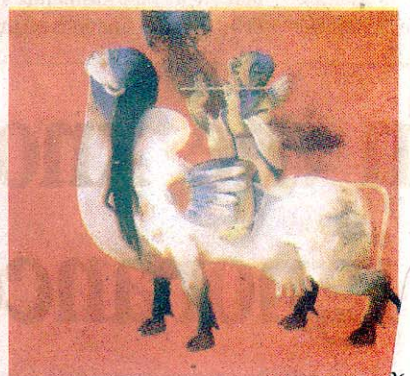
Since 2003, Shivani Virani has been running Artistree, the art-portfolio management and sourcing company she started. An avid art lover who has painted since she was five, Shivani holds a three-year diploma in Applied Art from Delhi. She is a consultant for, and dealer of, contemporary Indian art and has curated various shows in India over the last four years. Recently, in Bengaluru, Shivani held a charity auction of 40 artists' works, both old masters and new, upcoming artists, to raise funds for several Karnataka-based charities.



blurred format but are attractive to the eye. He has mainly painted on the theme of feminine sensuality in relation to nature art and spirituality.

He has also ornamented the ladies in his painting in the abstract sense as the painting. In one painting a lady is holding a pigeon very sensuously in her hand and she wishes to convey to the bird the hidden feelings of her heart. He has painted the spirit of motherhood in many styles. A lady is lovingly holding her child from behind. He has also portrayed the spirit of motherhood in an abstract sense by painting the head of the lady in the body of the cow. Lord Krishna is sitting on its back and blowing his flute.

The cow also has wings in it. This symbolises the Vedic ideology of the cow as a mother. A well-dressed lady is holding a flower in her head. The drapery of the cloth is very beautiful with her half chest open. She's removing a thorn that has pricked her feet. The painful emotion of separation is well reflected on her face. A mother is lovingly holding her baby in her hand. The



child is extremely secure in her hand and having a small flower in his hand and kept it in his mother's nose to smell.

He has colorfully painted a lady playing a flute and an angel like creature is listening to the rhythm of it. There is a leaf falling down in the steady melody of the rhythm. Her most touching painting is that a mother is swinging in her swing with her kids. She is holding both her kids with her hands and swinging. She is holding her kids well as swinging shows that she has deep responsibility to swing. The background of it is in yellow where leaves are falling and the scene looks extremely serene and it is very touching to the heart. The autumn leaves falling down is like mothers hopeless emotion of bringing her kids by holding the string as well as kids with the swinging swing. In one painting the mother is holding a child in arms and the child is also very comfortable at the company of its mother. The child is playing in her arms and is very comfortable in her company. He has painted the theme of human sensuality in a very deep manner. His style is very unique. It is uniform in all the paintings that explain different emotions.

Compiled by Regina Ruby